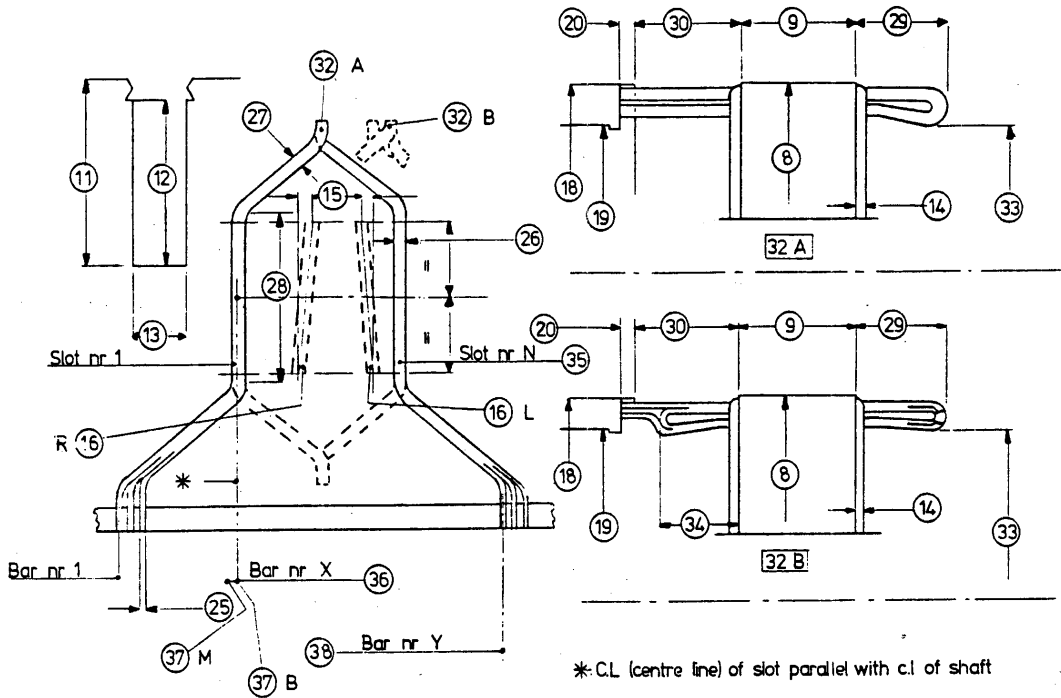


**DATA SHEET**

**DC ARMATURE WINDING (WAVE CONNECTION)**



**RATING PLATE**

1	Machine number and frame number	
2	Manufacturer	
3	Rated output (kW/HP)	
4	Rated speed (rpm)	
5	Rated voltage (V)	
6	Rated current (A)	
7	Class of insulation	

**COIL DATA**

21	Number of turns per coil	
22	Number of wires in parallel	
23	Bare wire dimensions	×
24	Insulated wire dimensions	×
25	Wire thickness in commutator	
26	Coil width in slot	
27	Coil width outside slot	
28	Straight length of coil side	
29	Rear extension	
30	Distance between core and riser	
31	Leads tinned or not	
32	Single or double knuckle (A/B)	
33	Minimum winding diameter	
34	Front extension	
35	Coil span from 1 to N	N =
36	Bar number X	X =
37	CL falls on bar number X or mica (B/M)	
38	Bar number Y	Y =
39	Weight of coil	
40	Weight of full set	
41	Dimensions in mm/inches	

**ARMATURE DATA**

8	Core diameter	
9	Core length	
10	Number of slots	
11	Slot depth	
12	Coil space	
13	Slot width	
14	Finger height	
15	Skewing of slots	
16	Skewing direction (R/L)	
17	Number of commutator bars	
18	Riser diameter	
19	Commutator diameter	
20	Riser width	

Data taken by: .....

Date: .....

**Contact Global Coils:**

Phone: (61 2) 4946 2277

Fax: (61 2) 4946 2275

Email: sales@globalcoils.com.au

Form No. & Name	Version No.	Revision Date
Form 019 - Data Sheet DC Armature (Wave Wound)	3	November 2011