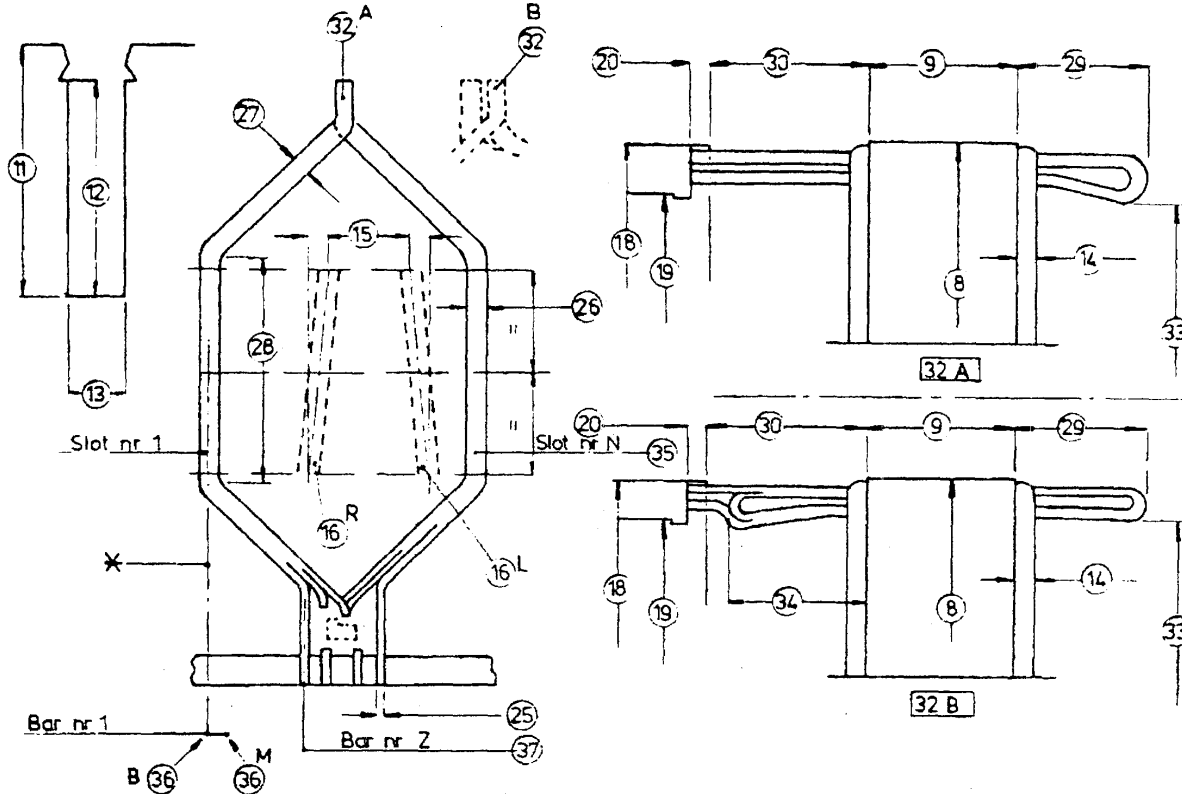


**DATA SHEET**

**DC ARMATURE WINDING (LAP CONNECTION)**



\* CL (centre line) of slot parallel with CL of shaft.

**RATING PLATE**

1	Machine / Frame no.	
2	Manufacturer	
3	Rated output (kW/hp)	
4	Rated speed (rpm)	
5	Rated voltage (V)	
6	Rated current (A)	
7	Insulation class	

**COIL DATA**

21	Number of turns per coil	
22	Number of wires in parallel	
23	Bare wire dimensions	x
24	Insulated wire dimensions	x
25	Wire thickness in commutator	
26	Coil width in slot	
27	Coil width outside slot	
28	Straight length of coil side	
29	Rear extension	
30	Distance between core and riser	
31	Leads tinned (yes/no)	
32	Single or double knuckle (A/B)	
33	Minimum winding diameter	
34	Front extension	
35	Coil span from slot 1 to N	N =
36	CL falls on bar no. 1 or mica (B/M)	
37	Bar number Z	Z =
38	Weight of coil (kg)	
39	Weight of full set	
40	Dimensions in mm/inches	

**ARMATURE DATA**

8	Core diameter	
9	Core length	
10	Number of slots	
11	Slot depth	
12	Coil space	
13	Slot width	
14	Finger height	
15	Skew of slots (No / ? mm skew)	
16	Skewing direction (R/L)	
17	Number of commutator bars	
18	Riser diameter	
18a	Com. segment slot depth	
18b	Com. segment slot width	
19	Commutator diameter	
20	Riser width	

**Notes**


Data taken by: ..... Date: .....

**Contact Global Coils:**

Phone: (61 2) 4946 2277

Fax: (61 2) 4946 2275

Email: sales@globalcoils.com.au

<b>Form No. &amp; Name</b>	<b>Version No.</b>	<b>Revision Date</b>
Form 018 - Data Sheet DC Armature (Lap Wound)	2	November 2011